

MIDLAND PUBLIC SCHOOLS 2015 BOND UPDATE

July 2nd, 2018

Construction/In Progress:

Chestnut Hill/Siebert Renovations and Additions:

- Abatement scheduled to be complete July 9th, 2018.
- Installation of exterior glazing and window frame system at Chestnut Hill and Siebert underway.
- Siebert addition painted and starting of interior painting.
- Installation of steel studs.
- Underground electrical work at Siebert.

Woodcrest Addition:

- Fences removed from site.
- Installation of window frames.

Look Ahead:

- Installing mechanical units in classrooms.
- Continue replacing exterior windows and doors.
- Hanging drywall on walls.
- Painting of existing classrooms.
- Parking lot scheduled to start July 9th for Woodcrest.
- Paving at Siebert.



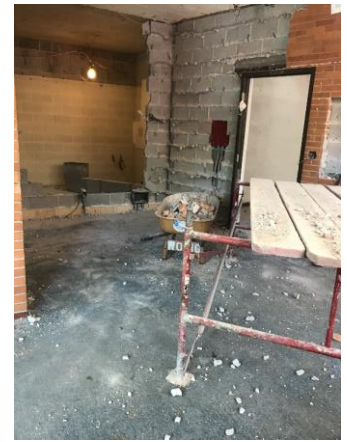
Siebert addition nearly enclosed



Interior walls painted at Siebert addition



Windows installed at Siebert addition



Main office demo at Siebert



Chestnut Hill maker space after sand leveling



Chestnut Hill maker space concrete placement



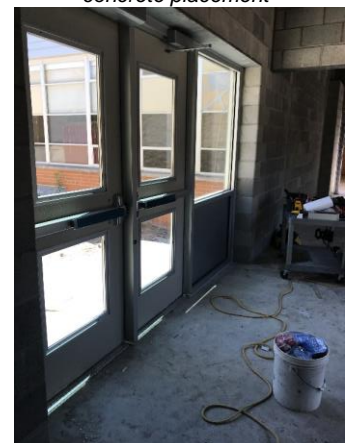
Electrical work at Siebert



Steel studs installed at Siebert



Exterior view of new doors at Siebert



Interior view of new doors at Siebert