

MIDLAND PUBLIC SCHOOLS 2015 BOND UPDATE

August 6th, 2018

Construction/In Progress:

Chestnut Hill/Siebert Renovations and Additions:

- Installation of exterior glazing and window frame system 100% complete.
- Interior painting of classrooms 95% complete.
- Chestnut Hill sidewalk placement 50% complete.
- Flooring installation 65% complete.
- Mechanical unit installation 95% complete.
- Siebert and Chestnut Hill parking lots pulverized and first layer of asphalt paved.
- Casework installation 50% complete.

Woodcrest Elementary Addition:

- Painting of Maker Space.
- Mechanical work 70% complete.

Look Ahead:

- Continue placing sidewalk, flooring, setting mechanical rooftop units, and painting existing classrooms at Chestnut Hill and Siebert.



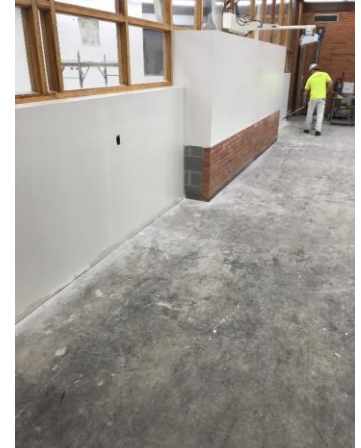
Painting of Woodcrest Maker Space



Drywall installed at Siebert Main Office



Sidewalk concrete placement at Chestnut Hill



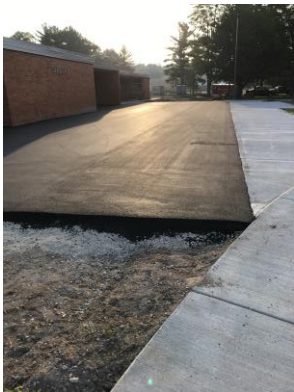
Painting continued at Siebert Art Room



Whiteboards installed at Chestnut Hill



Drywall painted in Chestnut Hill Maker Space



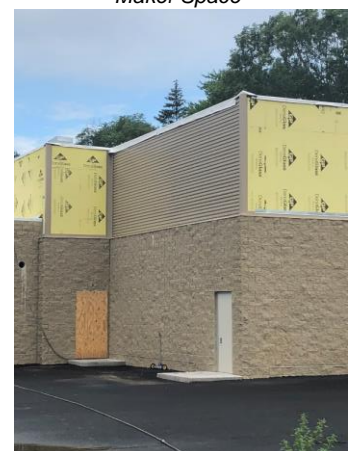
Siebert front sidewalk paved



Sidewalk concrete placement at Chestnut Hill



Siebert parking lot pulverized



Siding installed at Siebert Addition