

# MIDLAND PUBLIC SCHOOLS 2015 BOND UPDATE

## August 13<sup>th</sup>, 2018

### Construction/In Progress:

#### Chestnut Hill/Siebert Renovations and Additions:

- Interior painting of classrooms 99% complete.
- Chestnut Hill sidewalk placement 80% complete.
- Flooring installation 85% complete.
- Unit Ventilator installation 97% complete.
- Siebert and Chestnut Hill paving ongoing.
- Casework installation 85% complete.

#### Woodcrest Elementary Addition:

- Mechanical work 95% complete.
- Ceiling grid installed.

### Look Ahead:

- Continue placing sidewalk, flooring, installing lights and data.
- Mechanical unit start up and commissioning.



Crane Set Up at Chestnut Hill



Sidewalk Placement at Siebert



New Office Renovations at Siebert



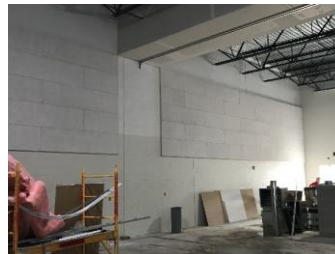
Ductwork installation at Siebert  
Maker Space



Lighting Installed at Chestnut Hill  
Maker Space



Chestnut Hill Art Room Ready for Flooring



Installation of Acoustical Panels in Chestnut Hill Gym/Cafeteria



Cubie installation at Siebert



Crane Lifting Air Handling Units at Chestnut Hill



View of Crane from Chestnut Hill Road